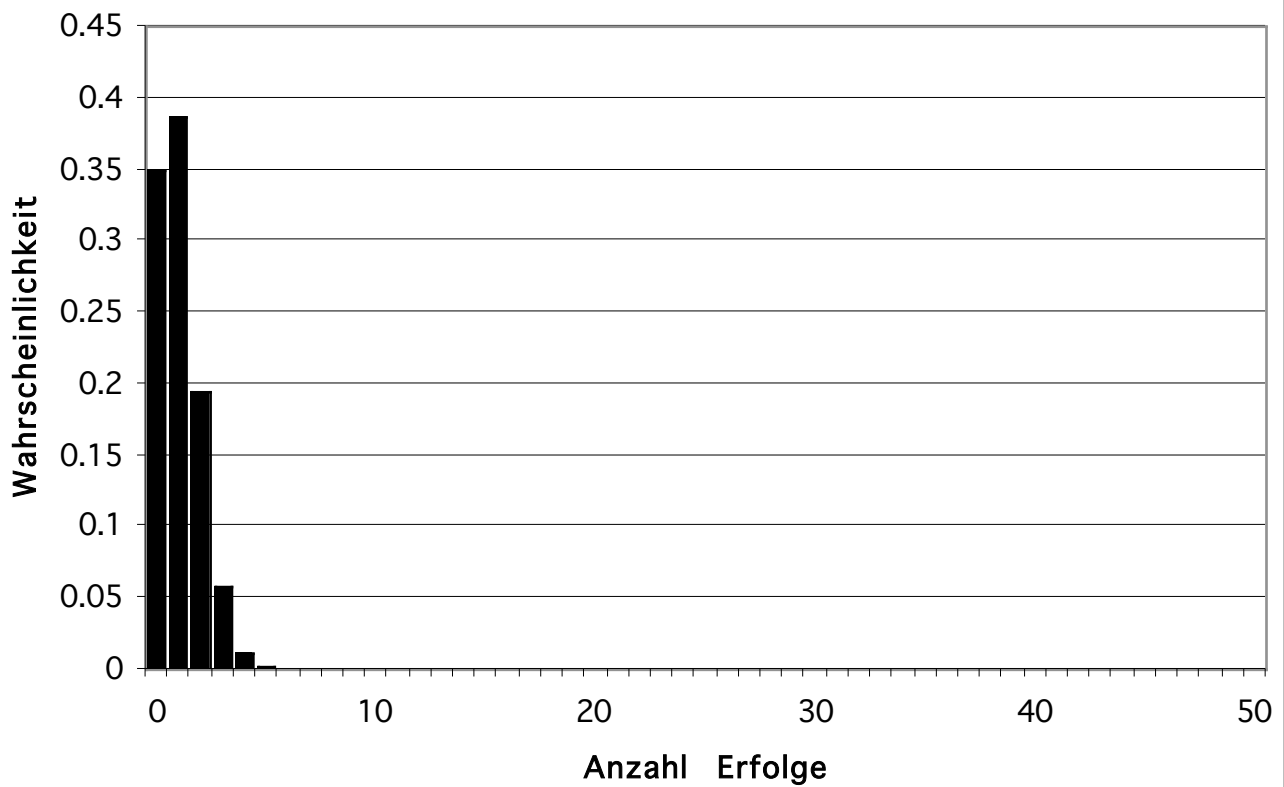
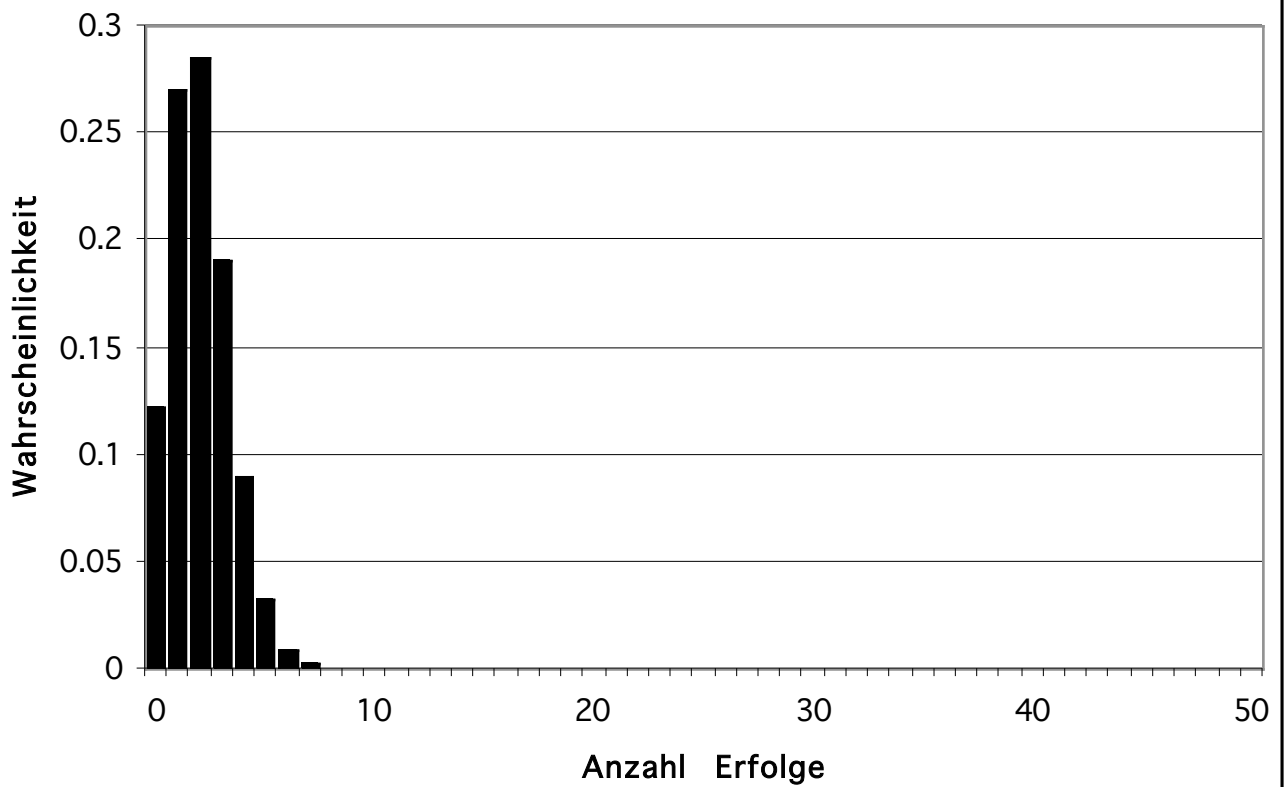


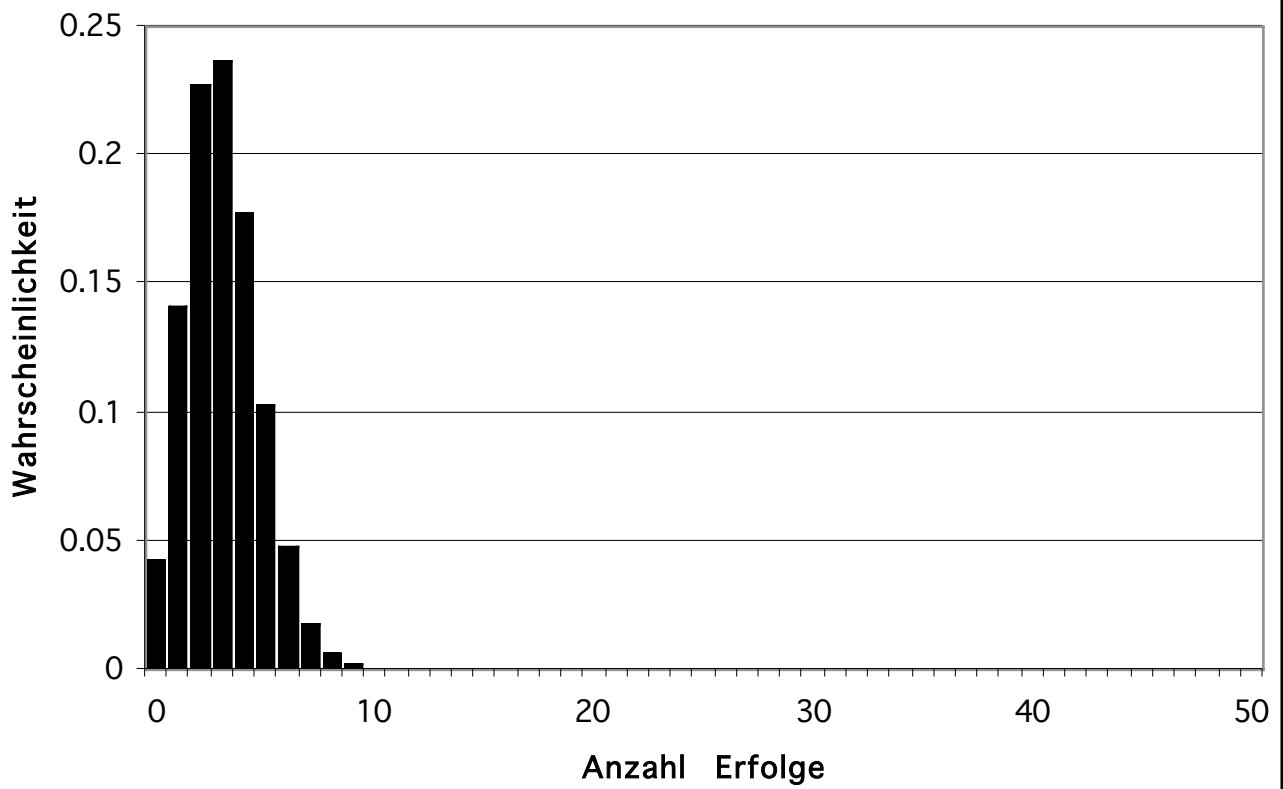
Binomialverteilung $n = 10$ $p = 0.1$



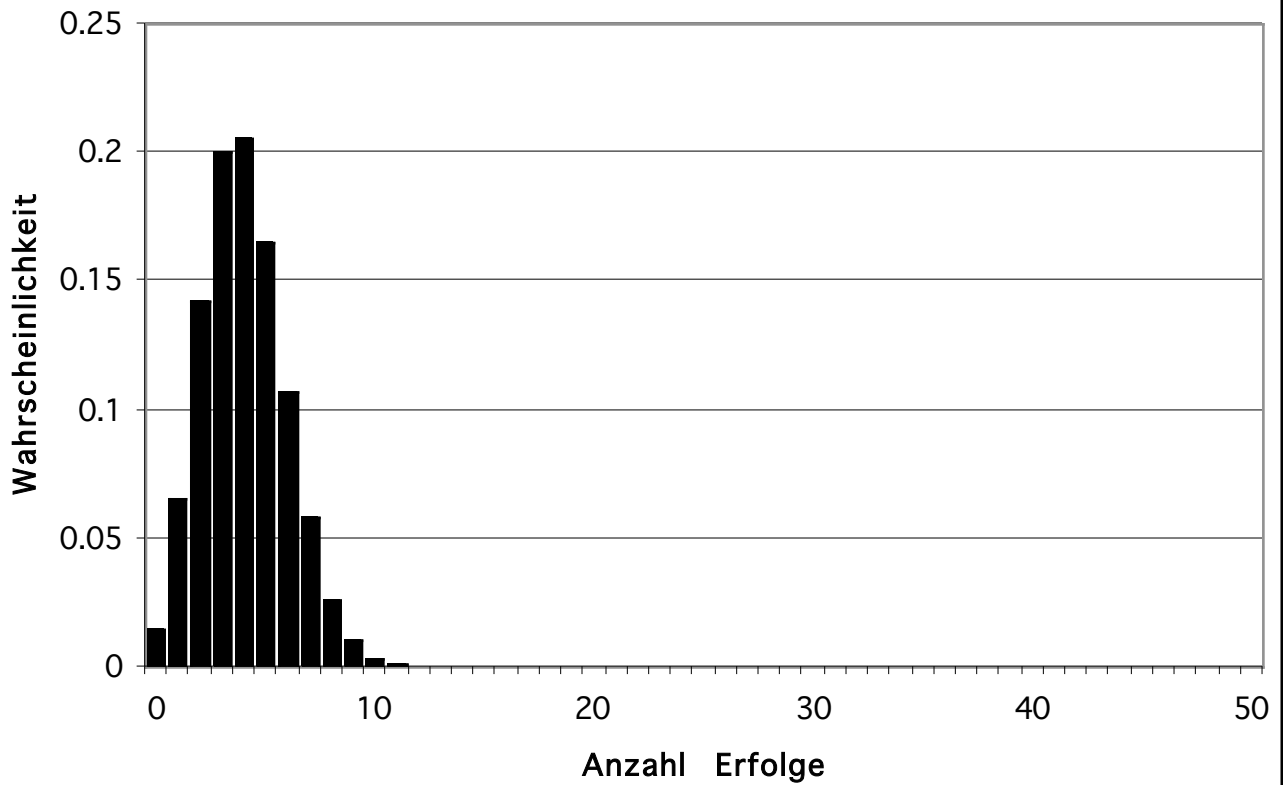
Binomialverteilung $n = 20$ $p = 0.1$



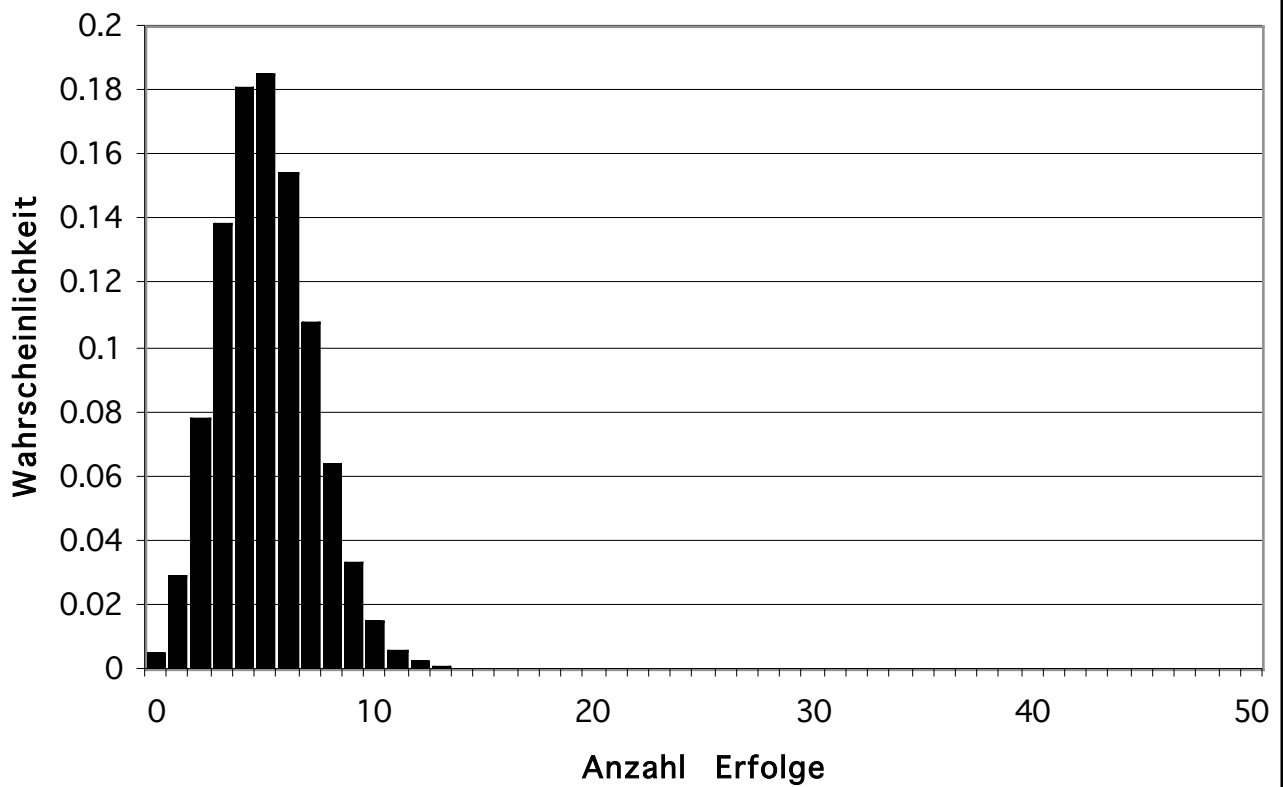
Binomialverteilung $n = 30$ $p = 0.1$



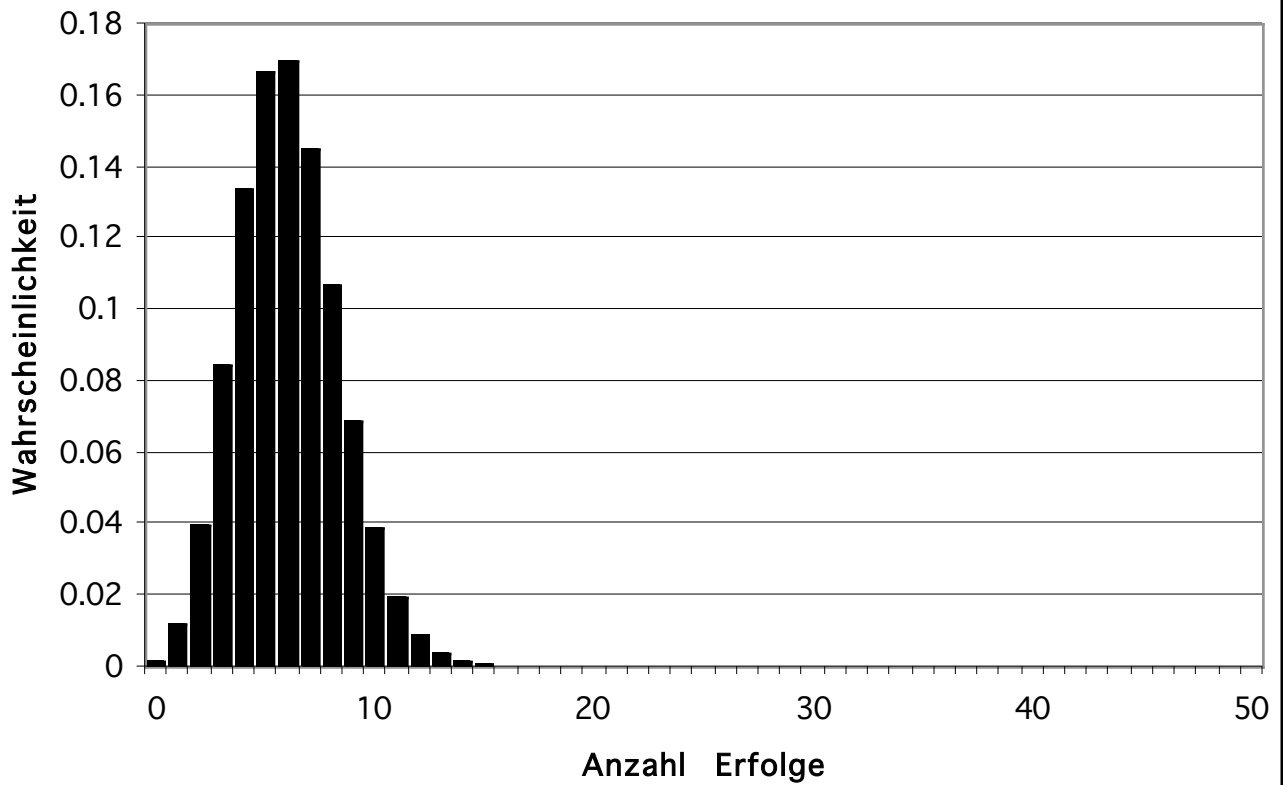
Binomialverteilung $n = 40$ $p = 0.1$



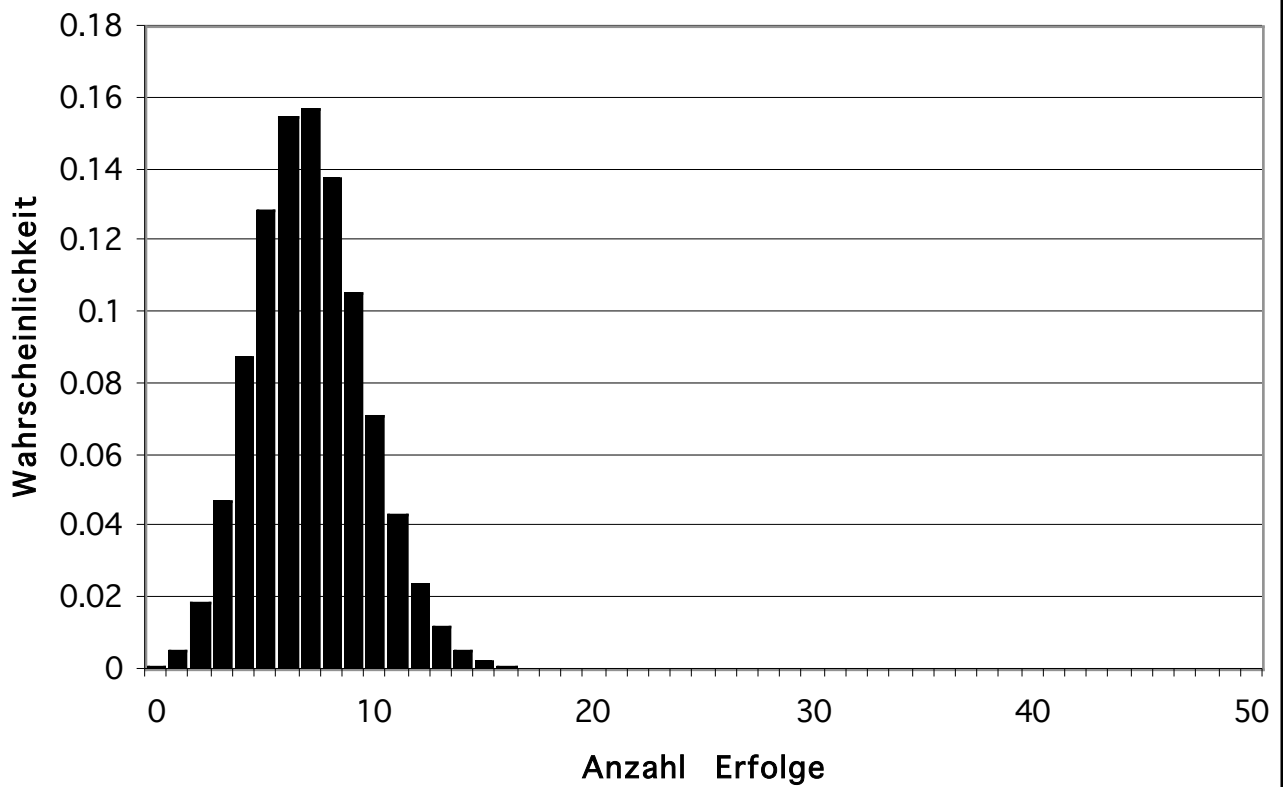
Binomialverteilung $n = 50$ $p = 0.1$



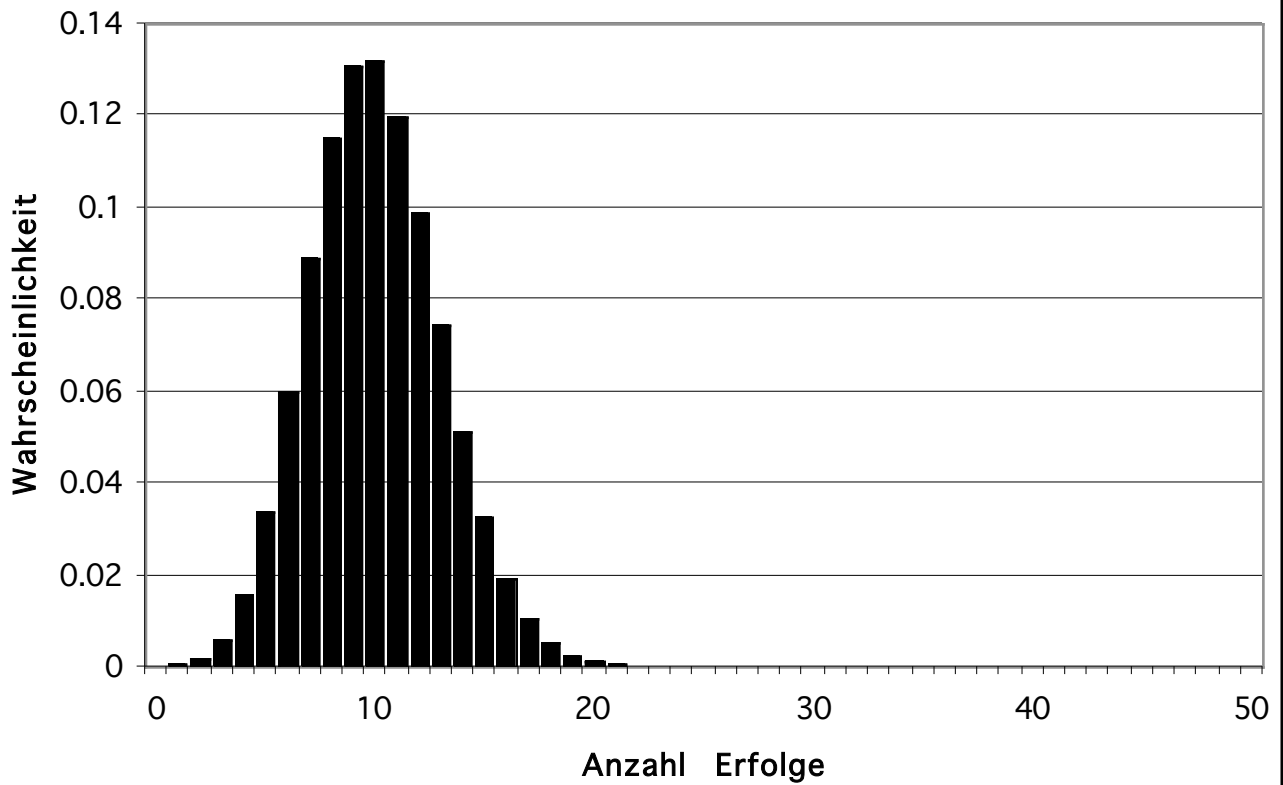
Binomialverteilung $n = 60$ $p = 0.1$



Binomialverteilung $n = 70$ $p = 0.1$



Binomialverteilung $n = 100$ $p = 0.1$



Binomialverteilung $n = 300$ $p = 0.1$

