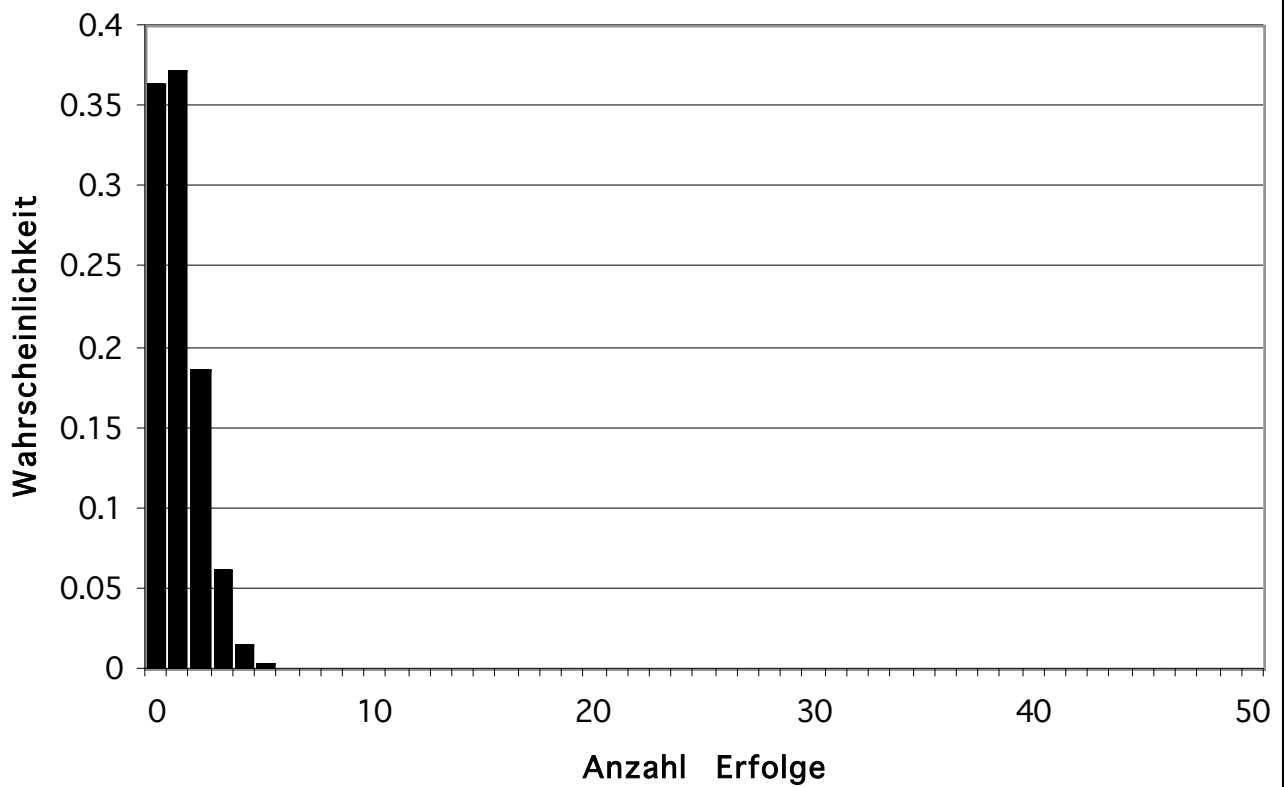
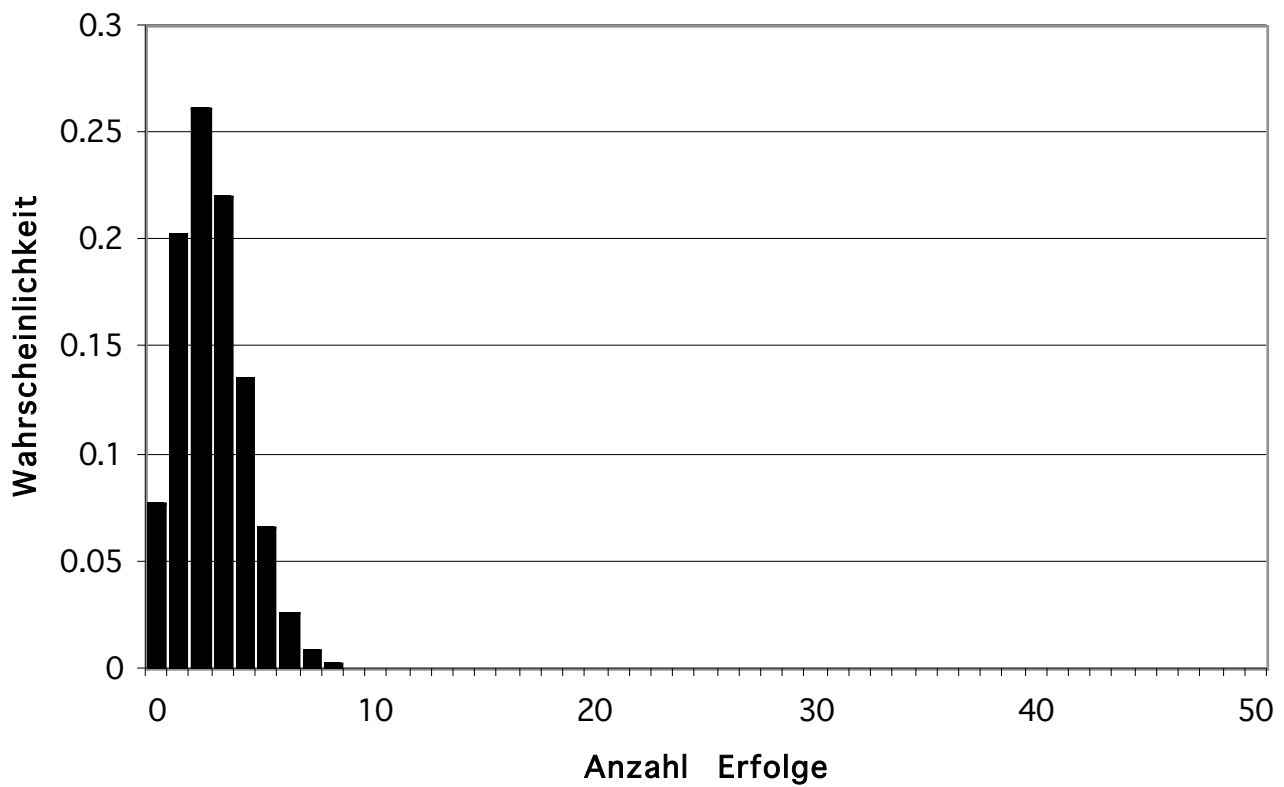


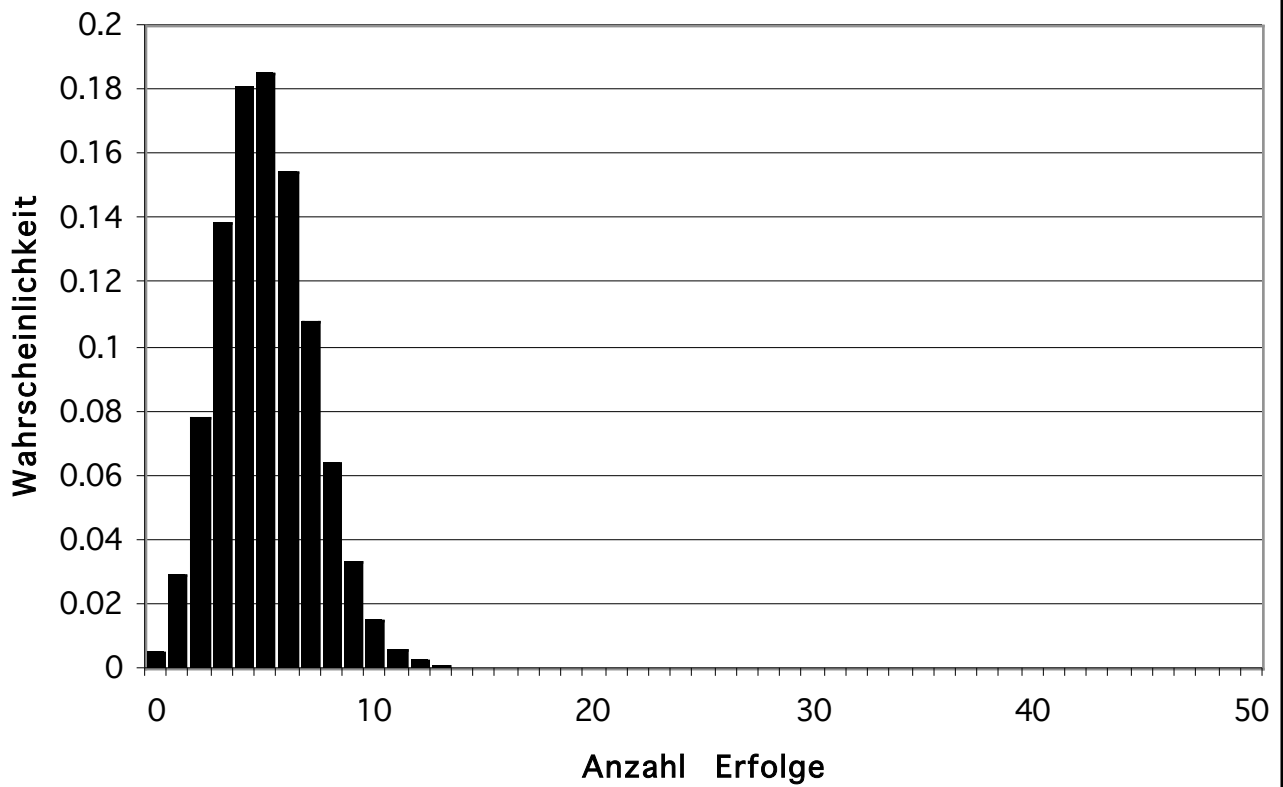
Binomialverteilung  $n = 50$   $p = 0.02$



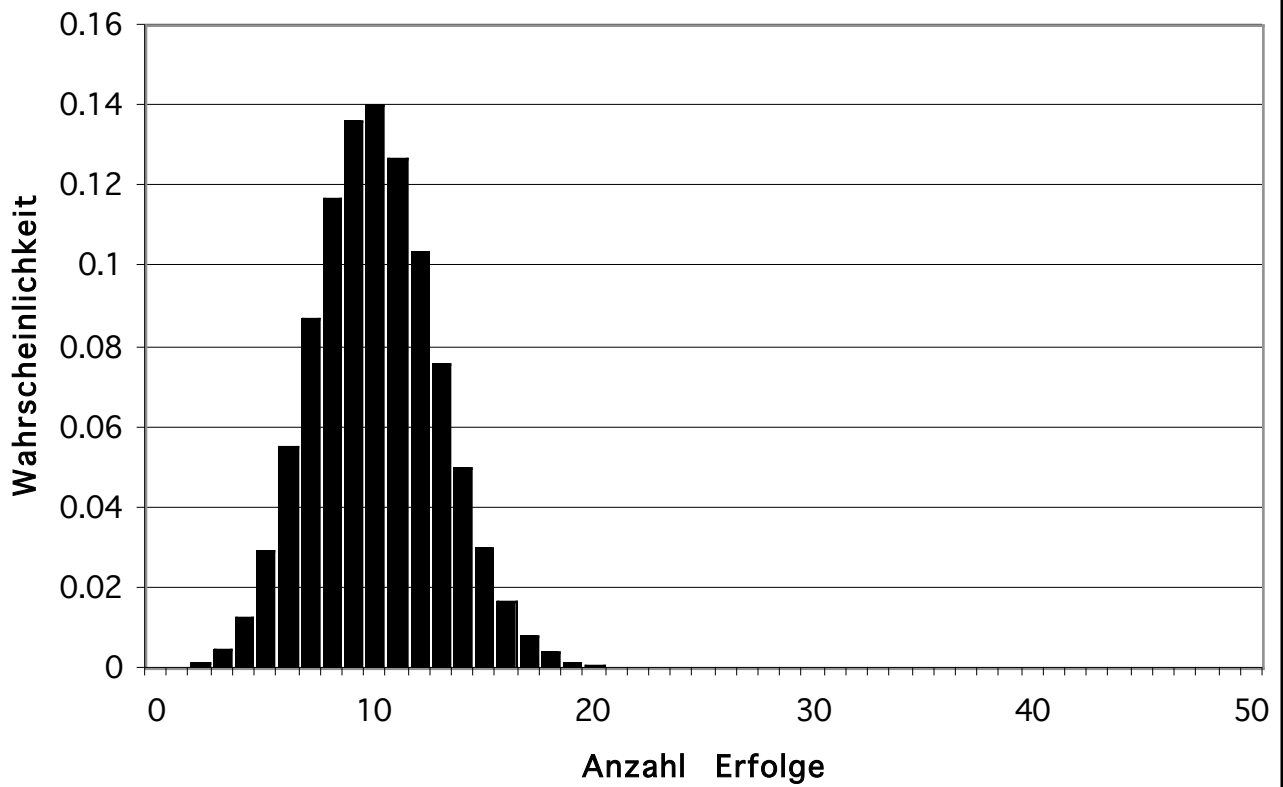
Binomialverteilung  $n = 50$   $p = 0.05$



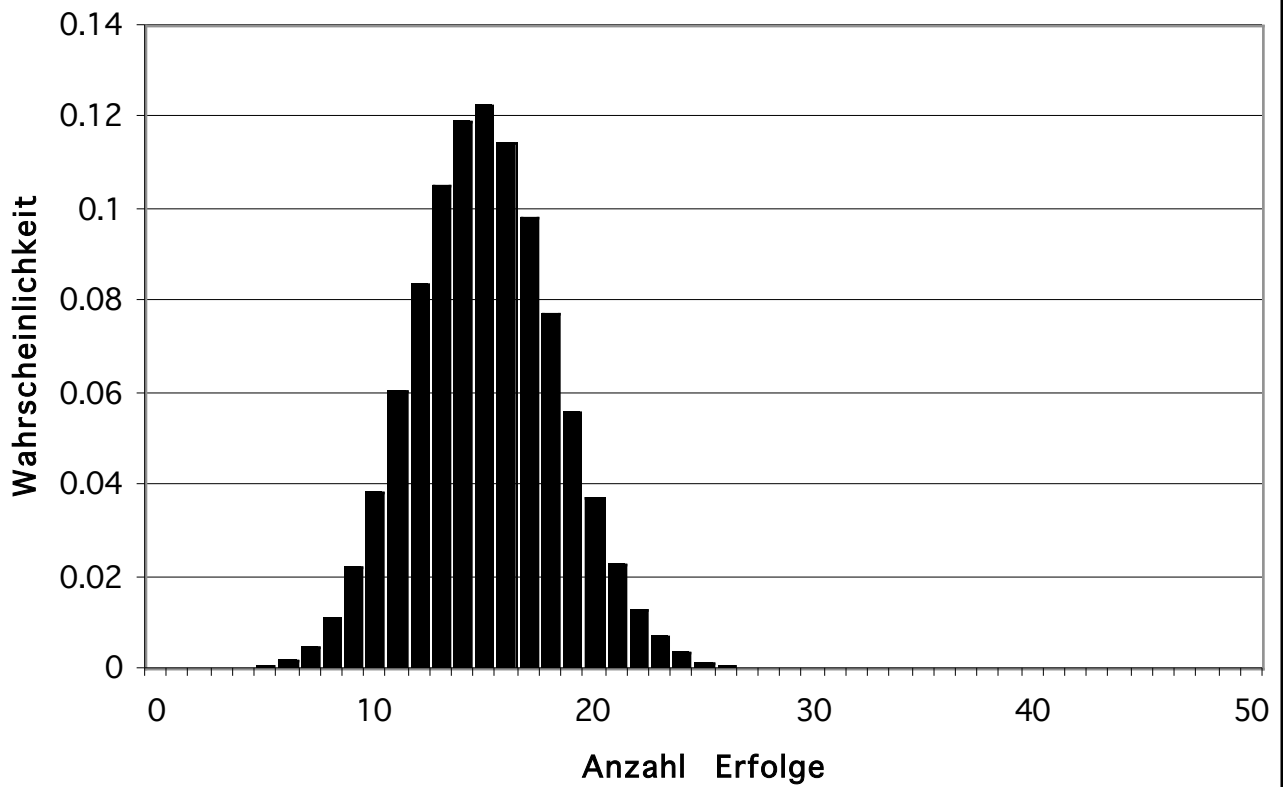
Binomialverteilung  $n = 50$   $p = 0.1$



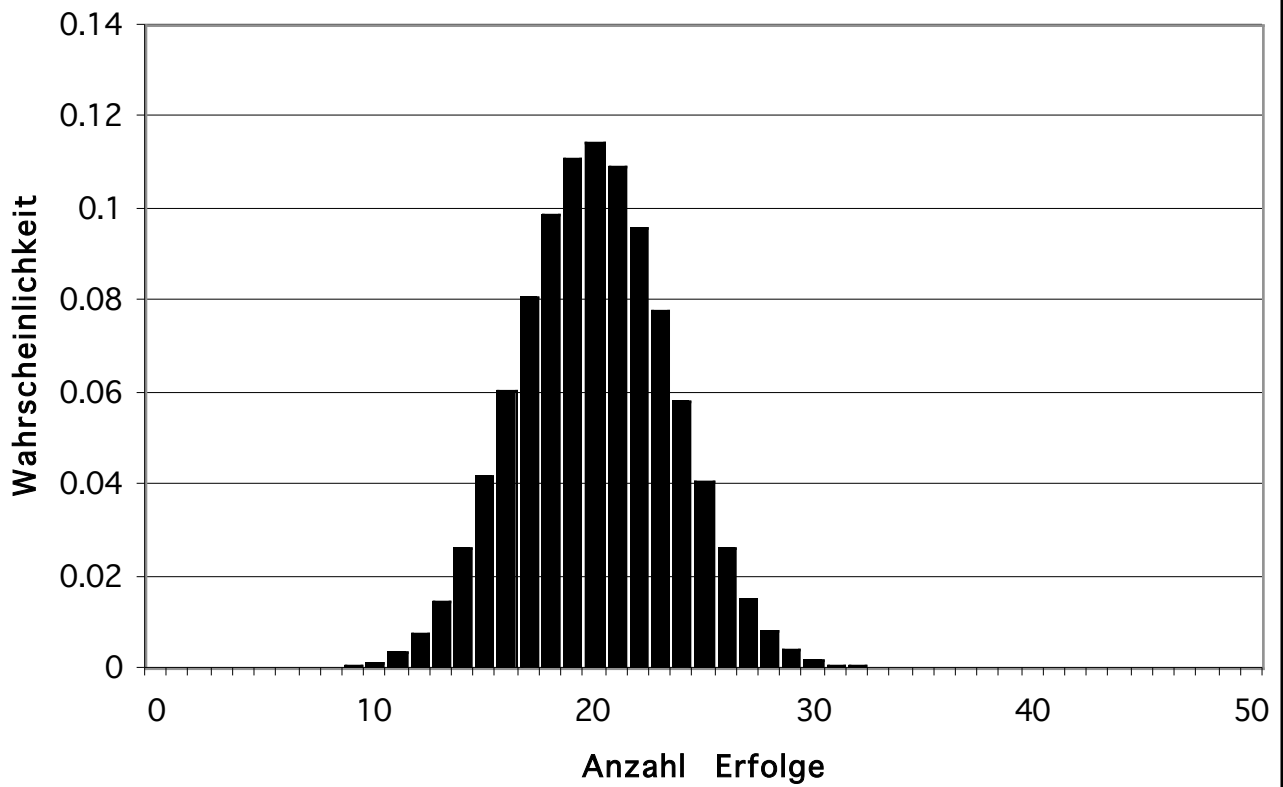
Binomialverteilung  $n = 50$   $p = 0.2$



Binomialverteilung  $n = 50$   $p = 0.3$



Binomialverteilung  $n = 50$   $p = 0.4$



# Binomialverteilung $n = 50$ $p = 0.5$

